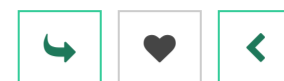


1 2 3

Animal welfare inspector

Also called: RSPCA inspector

Animal welfare inspectors investigate complaints about animal cruelty, rescue animals, and provide medical treatment.



What you'll do

Your day-to-day tasks may include:

- advising owners on proper care and issuing warnings
- rescuing animals and arranging medical treatment
- putting animals down humanely
- taking a case to court
- inspecting kennels, pet shops and agricultural shows
- working with local authorities to rescue injured deer or foxes
- writing reports
- giving talks to educate the public

To rescue animals, you may need to climb cliffs or trees.

Record relevant activities you've already done on the [Activities tool](#) >

Working hours and environment

You'll usually work around 35 hours a week. You'll work in shifts, so that could mean working nights, weekends, and bank holidays.

You'll likely need to travel to owners' homes, kennels, and events, so you may spend a lot of time driving from place to place. You'll be meeting new people regularly and might need to have difficult and sensitive conversations.

You'll work indoors and outdoors in all weathers.

Career path and progression

With experience, you could progress to chief inspector then regional superintendent.

You could move into management or training roles at the [RSPCA](#) headquarters.

Skills required

You'll need:

- practical skills, to handle animals confidently
- excellent communication skills, as you'll be meeting lots of new people
- the resilience to be able to handle confrontational or distressing situations
- good attention to detail, so your report writing is accurate
- strong principles when it comes to animals, to help you make ethical decisions

Got evidence of these skills? Record your examples on the [Skills tool](#) >

Entry requirements

You'll need:

- a high school diploma or Level 2 qualifications, which could look like BTECs, 5 GCSEs at grades 9 to 4 (A* to C), or Scottish National 5s including English
- experience of working with animals
- a driving licence
- good physical fitness, including the ability to swim 50 metres fully clothed
- to pass a criminal records check

Animal charity the Royal Society for the Prevention of Cruelty to Animals (RSPCA) has more information about this career on its website.

Related university subject profiles

These university subjects are related to this career; check out their profiles on the Subjects library:

- [Animal science](#) >
- [Veterinary medicine](#) >
- [Zoology](#) >

Related career profiles

You may also be interested in:

- [Kennel worker](#) >
- [Dog trainer](#) >
- [Animal care assistant](#) >
- [Animal behaviourist](#) >

Explore

Want to see what relevant education and training opportunities are available right now? Search here:

Animal science at uni:

[USA](#) > [UK](#) > [Canada](#) > [Europe](#) > [Asia](#) > [Australasia](#) > [Middle East and Africa](#) > [Ireland](#) >

Veterinary medicine at uni:

[USA](#) > [UK](#) > [Canada](#) > [Europe](#) > [Asia](#) > [Australasia](#) > [Middle East and Africa](#) > [Ireland](#) >

Zoology at uni:[USA >](#)[UK >](#)[Canada >](#)[Europe >](#)[Asia >](#)[Australasia >](#)[Middle East and Africa >](#)[Ireland >](#)**Apprenticeships:**[UK >](#)**College / Sixth Form:**[UK >](#)

Labour Market Information (LMI)

Current and predicted figures relating to the Animal welfare inspector profession. Median averages are shown, each with the specific career, or group of careers, that they apply to.

UK USA

Jobs

Regulatory associate professionals

71,683 **486** in your local area of Liverpool**Top 5 local areas**

1	Hampshire	2,267
2	Kent	2,149
3	Essex	1,929
4	Lancashire	1,738
5	Hertfordshire	1,394

Salaries

Inspectors of standards and regulations

£35,284

Regulatory associate professionals

£39,260 **£36,281** in your region of North West**Top 3 regions**

1	East of England	£44,932
2	South East	£39,682

3

Yorkshire and the Humber

£39,111

Growth

2020-2035

Business and public service associate professionals

+7.6% ↑ 171,912 jobs

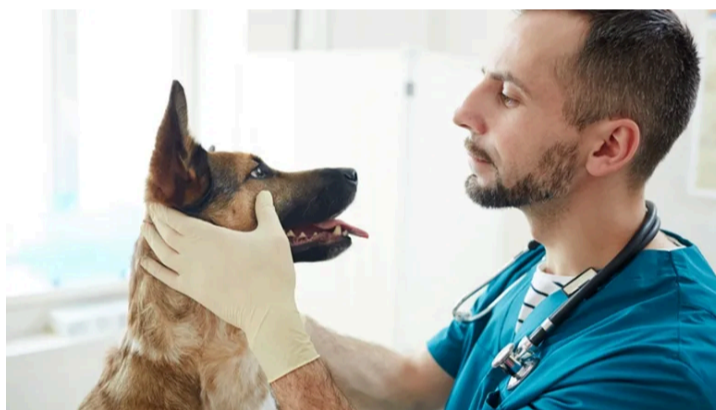
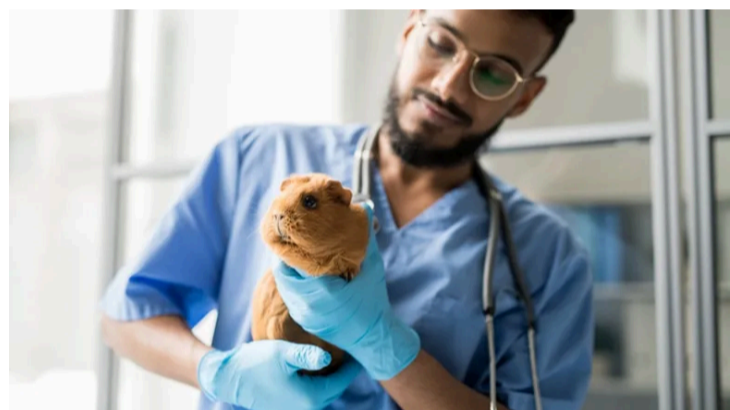
📍 **+5.7%** in your region of North West, an increase of 11,768 jobs

Save to Favourites? ❤️

You haven't favourited any Careers library profiles yet

People also liked...

Those that liked this career profile also liked the following



Animal care assistant



Animal care assistants look after animals in places like kennels, rescue centres, or sanctuaries.

[Read the profile >](#)

Veterinary nurse



Veterinary nurses work alongside vets to provide medical care to sick and injured animals.

[Read the profile >](#)

Vet

Vets diagnose and treat sick or injured animals.

[Read the profile >](#)