

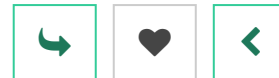
1

2

3

Palaeontologist

Palaeontologists study the fossils of plants and animals.



What you'll do

You could work in a university, a museum, in the oil and gas industry or for a scientific magazine or TV production company.

You'll usually specialise in a particular area of palaeontology, like:

- invertebrate palaeontology – animals without backbones like insects
- vertebrate palaeontology – animals with backbones such as dinosaurs, birds and fish
- palaeobotany – plant, flower and seed fossils
- micropalaeontology – microfossils like plankton or pollen

Your day-to-day duties could include:

- collecting data and samples on field trips
- managing volunteers on field trips
- examining and testing samples in the lab
- doing research and publishing your findings
- planning and delivering lectures
developing courses and workshops
- recording and classifying samples and collections
- giving talks and managing displays and exhibitions
- writing articles for scientific websites and magazines
- providing expert advice for broadcasters on programmes

As a research palaeontologist, you'll research into subjects like the causes of mass extinction.

In a museum, you'll look after dinosaur and reptile fossil collections and displays.

Record relevant activities you've already done on the [Activities tool](#) >

Working hours and environment

Working hours, patterns and environment

You'll usually work 9am to 5pm in an office or laboratory. You may need to work longer hours if you're on a project with a deadline.

If you work on an oil rig, you could spend several weeks on an offshore platform.

In fieldwork and on research trips you could work in remote parts of the world, on land or at sea.

The work is physically demanding.

Career path and progression

You could work as a geological surveyor, a consultant in mining and mineral exploration, or the oil and gas industry.

You could move into university teaching and research.

The skills you gain are also valued in the scientific media, TV and the financial sector.

Skills required

You'll need:

- observation skills
- the ability to work with statistical and graphical information
- scientific and technical skills
- a methodical and logical approach to work
- the ability to produce scientific reports for publication
- attention to detail
- the ability to build good working relationships with colleagues from around the world

Got evidence of these skills? Record your examples on the [Skills tool](#) >

Entry requirements

You'll usually need:

- a degree in botany, Earth sciences, geology, palaeontology or zoology
- 3 A levels, including maths and physics
- 5 GCSEs at grades 9 to 4 (A* to C) including maths, English and science

You could also do an integrated master's qualification, like an MGeol, MBiol or MSci.

Some employers, like museums, may ask for a degree or master's qualification.

Other employers, like universities or research institutions, will expect you to have completed, or be working towards, a PhD in your specialist area of interest.

Being able to speak a second language may also be helpful.

Related university subject profiles

These university subjects are related to this career; check out their profiles on the Subjects library:

- [Archaeology](#) >
- [Horticulture and Botany](#) >
- [Environmental and Earth sciences](#) >
- [Geography](#) >

- [Geology >](#)
- [Zoology >](#)

Related career profiles

You may also be interested in:

- [Archaeologist >](#)
- [Forensic scientist >](#)
- [Geoscientist >](#)

Explore

Want to see what relevant education and training opportunities are available right now? Search here:

Archaeology at uni:

- [USA >](#)
[UK >](#)
[Canada >](#)
[Europe >](#)
[Asia >](#)
[Australasia >](#)
[Middle East and Africa >](#)
[Ireland >](#)

Horticulture and Botany at uni:

- [USA >](#)
[UK >](#)
[Canada >](#)
[Europe >](#)
[Asia >](#)
[Australasia >](#)
[Middle East and Africa >](#)
[Ireland >](#)

Environmental and Earth sciences at uni:

- [USA >](#)
[UK >](#)
[Canada >](#)
[Europe >](#)
[Asia >](#)
[Australasia >](#)
[Middle East and Africa >](#)
[Ireland >](#)

Geography at uni:

- [USA >](#)
[UK >](#)
[Canada >](#)
[Europe >](#)
[Asia >](#)
[Australasia >](#)
[Middle East and Africa >](#)
[Ireland >](#)

Geology at uni:

- [USA >](#)
[UK >](#)
[Canada >](#)
[Europe >](#)
[Asia >](#)
[Australasia >](#)
[Middle East and Africa >](#)
[Ireland >](#)

Zoology at uni:

- [USA >](#)
[UK >](#)
[Canada >](#)
[Europe >](#)
[Asia >](#)
[Australasia >](#)
[Middle East and Africa >](#)
[Ireland >](#)

Apprenticeships:

- [UK >](#)

Labour Market Information (LMI)

Current and predicted figures relating to the Palaeontologist profession. Median averages are shown, each with the specific career, or group of careers, that they apply to.

- UK
 USA

Jobs

Natural and social science professionals

97,714

 **952** in your local area of Liverpool

Top 5 local areas

1	Cambridgeshire	4,830
2	Oxfordshire	4,457

3	Hertfordshire	2,914
4	Surrey	2,392
5	Hampshire	2,379

Salaries

Physical scientists

£47,289

Natural and social science professionals

£41,904

 **£41,224** in your region of North West

Top 3 regions

1	London	£48,418
2	South East	£43,471
3	North East	£42,304

Growth

2020-2035

Science, research, engineering and technology professionals

+41.4%  897,801 jobs

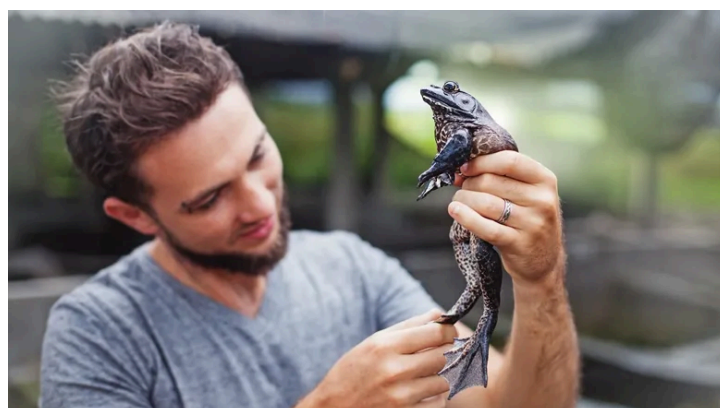
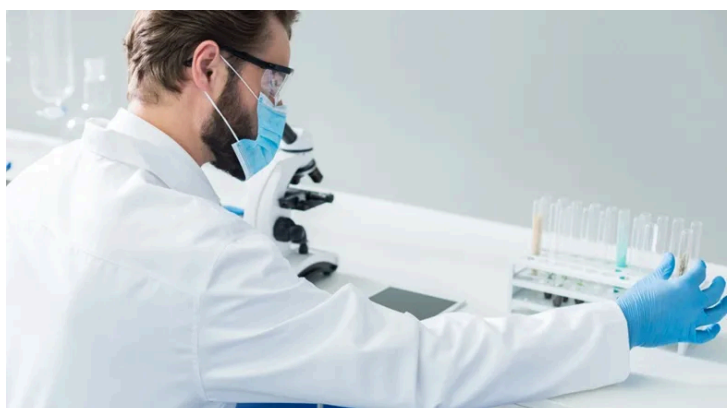
 **+38.5%** in your region of North West, an increase of 80,754 jobs

Save to Favourites? 

You haven't favourited any Careers library profiles yet

People also liked...

Those that liked this career profile also liked the following



Archaeologist



Archaeologists find and analyse historical artefacts to study the past

[Read the profile >](#)

Zoologist



Zoologists study animals and their behaviours, including topics like evolution, physiology, and classification.

[Read the profile >](#)

Oceanographer

Oceanographers study the seas ar

[Read the profile >](#)