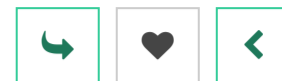


1 2 3

# Stagehand

Also called: Stage technician

Stagehands help to get things ready on set for performances in the theatre, at concerts and in TV and film studios.



## What you'll do

Your day-to-day duties may include:

- loading and unloading equipment
- helping carpenters build and put up scenery
- attending rehearsals
- moving scenery, furniture and heavy equipment
- opening and closing theatre curtains between acts
- operating manual and automated scenery-moving machinery
- clearing the stage or studio and backstage area at the end of the performance

Record relevant activities you've already done on the [Activities tool](#) >

## Working hours and environment

Your hours will vary according to the needs of the show. Most theatre performances take place in the evening, but you'll also work in the afternoons during rehearsals or matinee shows. In film and TV most of the technical work is during the day.

You might work in one venue, or travel to different venues when on tour.

You'll sometimes need to work at height.

## Career path and progression

## Skills required

---

You'll need:

- good physical fitness and stamina
- good practical skills
- the ability to work under pressure

Got evidence of these skills? Record your examples on the [Skills tool](#) >

## Entry requirements

---

There are no set requirements. Backstage experience from school, college, amateur, or fringe productions will be helpful. It'll also help if you have skills and experience in carpentry, electrical work, metalwork, painting and decorating, sound, or lighting.

You could start in a theatre or venue as a member of casual backstage staff.

You could get into this job through an [apprenticeship](#).

[Creative Choices](#) has more information about careers in the theatre and the performing arts.

## Related university subject profiles

---

These university subjects are related to this career; check out their profiles on the Subjects library:

- [Drama and Theatre studies](#) >

## Related career profiles

---

You may also be interested in:

- [Roadie](#) >
- [Prop maker](#) >
- [Production runner \(TV or film\)](#) >
- [Stage manager](#) >
- [Lighting technician](#) >
- [Grip](#) >

## Explore

---

Want to see what relevant education and training opportunities are available right now? Search here:

**Drama and Theatre studies at uni:**

[USA](#) > [UK](#) > [Canada](#) > [Europe](#) > [Asia](#) > [Australasia](#) > [Middle East and Africa](#) > [Ireland](#) >

**Apprenticeships:**

[UK](#) >

## Labour Market Information (LMI)

Current and predicted figures relating to the Stagehand profession. Median averages are shown, each with the specific career, or group of careers, that they apply to.

UK  USA

 **Jobs**

## Artistic, literary and media occupations

**342,899**

📍 2,417 in your local area of Liverpool

## Top 5 local areas

1	Surrey	8,868
2	Hackney	8,587
3	Kent	8,466
4	Hertfordshire	8,120
5	Lambeth	7,261

 **Salaries**

## Photographers, audio-visual and broadcasting equipment operators

**£29,047**

## Artistic, literary and media occupations

**£32,914**

📍 £30,531 in your region of North West

## Top 3 regions

1	South East	£35,849
2	London	£34,864
3	North West	£30,531

 **Growth**

2020-2035

## Culture, media and sports occupations

**+.2%** ↑ 1,593 jobs

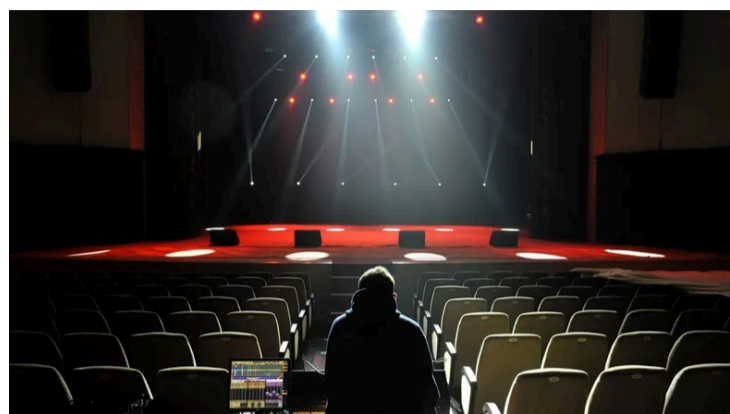
📍 -4.8% in your region of North West, an decrease of 2,325 jobs

Save to Favourites? 

You haven't favourited any Careers library profiles yet

## People also liked...

Those that liked this career profile also liked the following



### Set designer



Design and create backdrops and settings for video productions including TV, film, and theatre.

[Read the profile >](#)

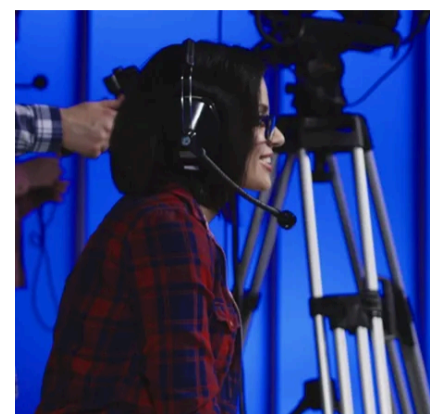


### Actor



Actors bring stories and characters to life in film and television, on the stage, in audiobooks, or on the radio.

[Read the profile >](#)



### Director (TV or film)

TV and film directors are responsible for their vision of a script. They make key decisions on casting, production design, and editing.

[Read the profile >](#)